



STELLENBOSCH

1904

Newsletter from the General Manager

16 February 2026

Dear Member

### The Final Countdown

Our theme song for the next ten days is the catchy chorus from the 1986 song “The Final Countdown” by the Swedish rock band “Europe”. After twelve months of anticipation, effort, uncertainty, anxiety, and whole lot of other abstract nouns, we are 10 days away from the **115<sup>th</sup> Investec South African Open**.

This week is entirely for the staging crews to finalise all the building of hospitality suites, stands, gates, shops, medical facilities, and parking areas. At the same time, we are busy putting the final touches to an already impressive golf course and clubhouse. **Please note the Club and all our facilities will be closed from tomorrow 17 February till Tuesday, 3 March 2026.**

The purpose of this short newsletter is to provide some information for members to improve your experience as spectators.

### Accreditation for the “Members enclosure”

Members who have bought tickets through the Stellenbosch Golf Club website, have access to the “Members enclosure” that is situated east of the 9<sup>th</sup> and 10<sup>th</sup> holes. Access to the “Members enclosure” will be restricted to those wearing a disposable colour wrist band issued for the respective days. To ensure there is no undue delay in entering the “Member’s enclosure”, all ticket purchasers are invited to pick up their unique wristbands from tomorrow Tuesday 17 February till Thursday 19<sup>th</sup> February between the hours of 10:00 and 16:00 at the Club. As the Clubhouse will be closed, the wrist bands will be issued to the respective purchasers of the tickets in a “drive through facility set up in the parking area in front of the Clubhouse. To enter the Club please inform the security guard at the main gate that your purpose for entering is to collect your member enclosure accreditation, drive up to the parking area and follow the signs where our proshop staff will assist you. All accreditation envelopes are in alphabetical sequence according to the ticket purchaser’s surname.

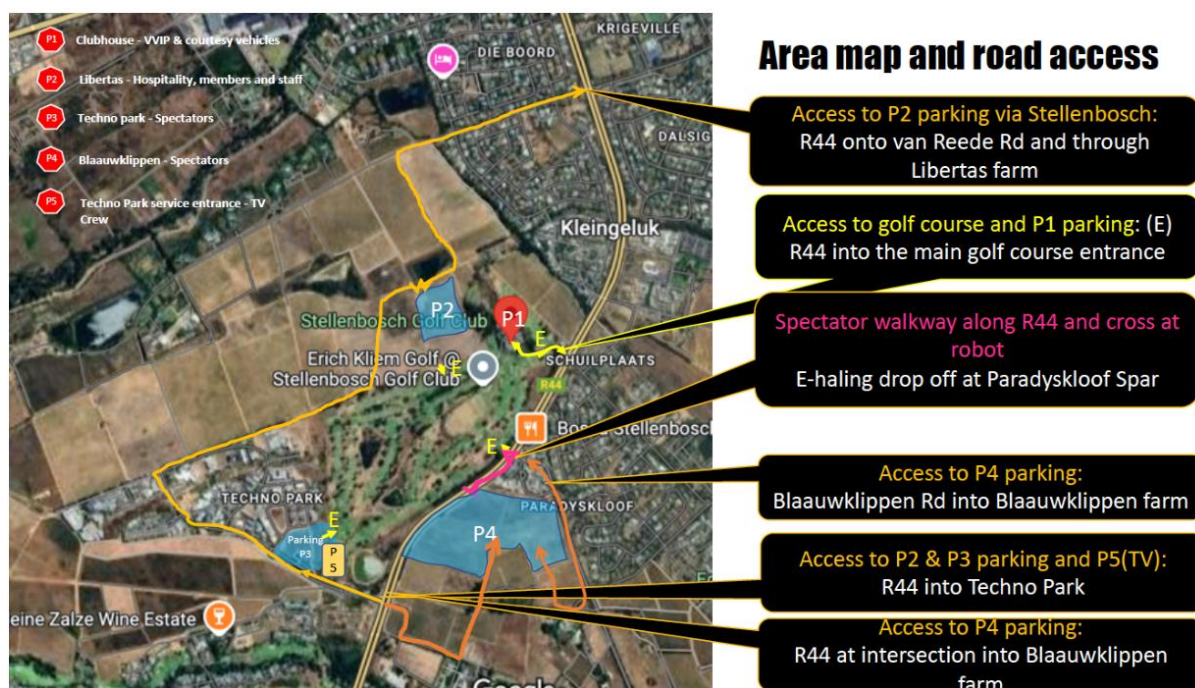
For those who cannot visit the Club during the next three days, please collect your accreditation on the respective day/s **at the entrance of the member’s enclosure**.

### Parking

There will be three main entrance points to the Golf course i.e.:

- On the 6<sup>th</sup> hole close to the 6<sup>th</sup> green and behind the new driving range and medical facilities. This entrance is for those who are parking on the Libertas Farm “**P2**”.
- Behind the 10<sup>th</sup> green for those who are parking on the Blaauwklippen farm “**P4**”.
- On the 4<sup>th</sup> hole for those who are making use of Technopark for parking “**P3**”

Every ticket has, in fine print one has to admit, the allocated parking area associated with the ticket purchased. Member's parking is allocated on the farm Libertas "P2" which is accessed from the R44 through the Boord via Van de Rheede road. It is however not essential to park in the allocated parking area and members who may find the Blaauwklippen parking or the Technopark parking more convenient are welcome to make use of these parking areas. Technopark on the **Saturday and Sunday** may be particularly attractive to those approaching from the Somerset West area or the N2 as there will be ample parking with quick access through the gate at the 4<sup>th</sup> hole.



### Tickets:

If there is any member who have not yet purchased a ticket, you can do so via the Club's website:

- Open the Stellenbosch Golf Club Website on your browser or "CTRL click" on this link [www.Stellenboschgolfclub.com](http://www.Stellenboschgolfclub.com) .
- Click on the "MEMBERS" button which will open a "drop down" menu.
- Click on the "INVESTEC SA OPEN TICKETS"
- Insert your "MEMBER ID" if you have not done so already – This number is available on your Clubmaster app. Open the clubmaster app on your smart phone and click on "Member information", the "member number" that appear at the top is your personal "MEMBER ID".
- After inserting your "MEMBER ID" press "SUBMIT" and the ticket options will appear.
- **Unfortunately for Sunday 01 March 2026 all tickets to the "members enclosure" have been sold out. – general access tickets are still available on the Sunshine Tour website or at the gate.**

Best wishes

Chris